



APPENDIX

15

15.1	International Network.....	145
15.2	National Network.....	146
15.3	List of Figures.....	158

15.1 INTERNATIONAL NETWORK

15.1.1 Swiss Business Hubs Investment Promotion

Europe

Germany

Swiss Business Hub Germany
c/o Consulate General of
Switzerland
Hirschstrasse 22
70173 Stuttgart, Germany
Phone +49 711 22 29 43 29
stu.sbhgermany@eda.admin.ch

France

Swiss Business Hub France
c/o Embassy of Switzerland
142, rue de Grenelle
75007 Paris, France
Phone +33 1 49 55 67 85
par.sbhfrance@eda.admin.ch

Italy

Swiss Business Hub Italy
c/o Consulate General of
Switzerland – Italy
Via Palestro, 2
I-20121 Milan
Phone +39 02 77 79 1641
mil.sbhitalia@eda.admin.ch

UK & Ireland

Swiss Business Hub UK & Ireland
c/o Embassy of Switzerland
16–18 Montagu Place
London W1H 2BQ, UK
Phone +44 20 7616 6000
lon.sbhuk@eda.admin.ch

Americas

Canada

Swiss Business Hub Canada
c/o Consulate General of
Switzerland
1572, Docteur-Penfield Avenue
QC H3G 1C4 Montreal, Canada
Phone +1 514 932 7181
mon.sbhcanada@eda.admin.ch

USA

Swiss Business Hub USA
c/o Consulate General of
Switzerland
633 Third Avenue, 30th Floor
New York, NY 10017-6706,
United States
Phone +1 212 599 5700 ext 1032
nyc.sbhusa@eda.admin.ch

Asia

China

Swiss Business Hub China
c/o Embassy of Switzerland
Sanlitun Dongwujie 3
100600 Beijing/China
Phone +86 10 8532 88 88
bei.sbhchina@eda.admin.ch

India

Swiss Business Hub India
c/o Consulate General of
Switzerland
102 Maker Chamber IV, 10th floor
222, Jammalal Bajaj Marg
Nariman Point
Mumbai 400 021, India
Phone +91 22 2285 8161
mum.sbhindia@eda.admin.ch

Japan

Swiss Business Hub Japan
c/o Embassy of Switzerland
5 Chome-9-12 Minami-Azabu
Minato-ku
Tokyo 106-0047, Japan
Phone +81 3 5449 8424
tok.sbhjapan@eda.admin.ch

South Korea

Swiss Business Hub South Korea
c/o Embassy of Switzerland
77 Songwol-gil, Jongno-gu
Yongsan-gu
140-887 Seoul, Korea
Phone +82 2 739 9511 / 12 / 13 / 14
seo.sbh-korea@eda.admin.ch

15.1.2 Additional Swiss Business Hubs

Austria

Swiss Business Hub Austria
c/o Embassy of Switzerland
Prinz Eugen-Strasse 9a
1030 Vienna, Austria
Phone +43 1 795 05 37
vie.sbhaustralia@eda.admin.ch

Poland

Swiss Business Hub Central
Europe
c/o Embassy of Switzerland
Aleje Ujazdowskie 27
00-540 Warsaw, Poland
Phone +48 22 628 04 81
var.sbhpoland@eda.admin.ch

Russia

Swiss Business Hub Russia
c/o Embassy of Switzerland
Per. Ogorodnaya Sloboda 2/5
Entrance 1, Side Gusyatinikov Per.
119034 Moscow, Russia
Phone +7 495 225 88 41
mot.sbhruussia@eda.admin.ch

Spain

Swiss Business Hub Spain
c/o Embassy of Switzerland
Calle Nuñez de Balboa 35A-7^o,
Edificio Goya
28001 Madrid, Spain
Phone +34 91 432 04 66
mad.sbhspain@eda.admin.ch

Turkey

Swiss Business Hub Turkey
c/o Consulate General of
Switzerland
Esentepe Mah. Büyükdere Cad.
173, 1. Levent Plaza A Blok Kat: 3
34394 Levent – Sisli – Istanbul,
Turkey
Phone +90 (0) 212 283 12 82
ist.sbhtrkey@eda.admin.ch

Brasilien

Swiss Business Hub Brazil
c/o Consulado Geral da Suíça
AV. Paulista 1754, 4^o andar Edifício
BR-01310-920 São Paulo / SP
Tel. +55 11 33 72 82 00
sao.sbhbrasil@eda.admin.ch

Mexico

Swiss Business Hub México
c/o Embassy of Switzerland
Paseo de las Palmas No. 405,
Torre Optima I, piso 11 Col.
Lomas de Chapultepec
11000 Mexico D.F., Mexico
Phone +52 55 91 78 43 70
ruben.arazadiaz@eda.admin.ch

South Africa

Swiss Business Hub Southern
Africa
c/o Embassy of Switzerland
Brooklyn Square 0075
ZA-0181 Pretoria
Phone +27 12 452 0690
pre.sbhsa@eda.admin.ch

ASEAN

Swiss Business Hub ASEAN
c/o Embassy of Switzerland
1 Swiss Club Link
289754 Singapore
Phone +65 6594 6580
sin.sbhasean@eda.admin.ch

Hong Kong

Swiss Business Hub Hong Kong
c/o Consulate General of
Switzerland
62/F Central Plaza
18 Harbour Road
Wan Chai, Hong Kong
Phone +852 35 09 50 00
hon.vertretung@eda.admin.ch

Gulf States

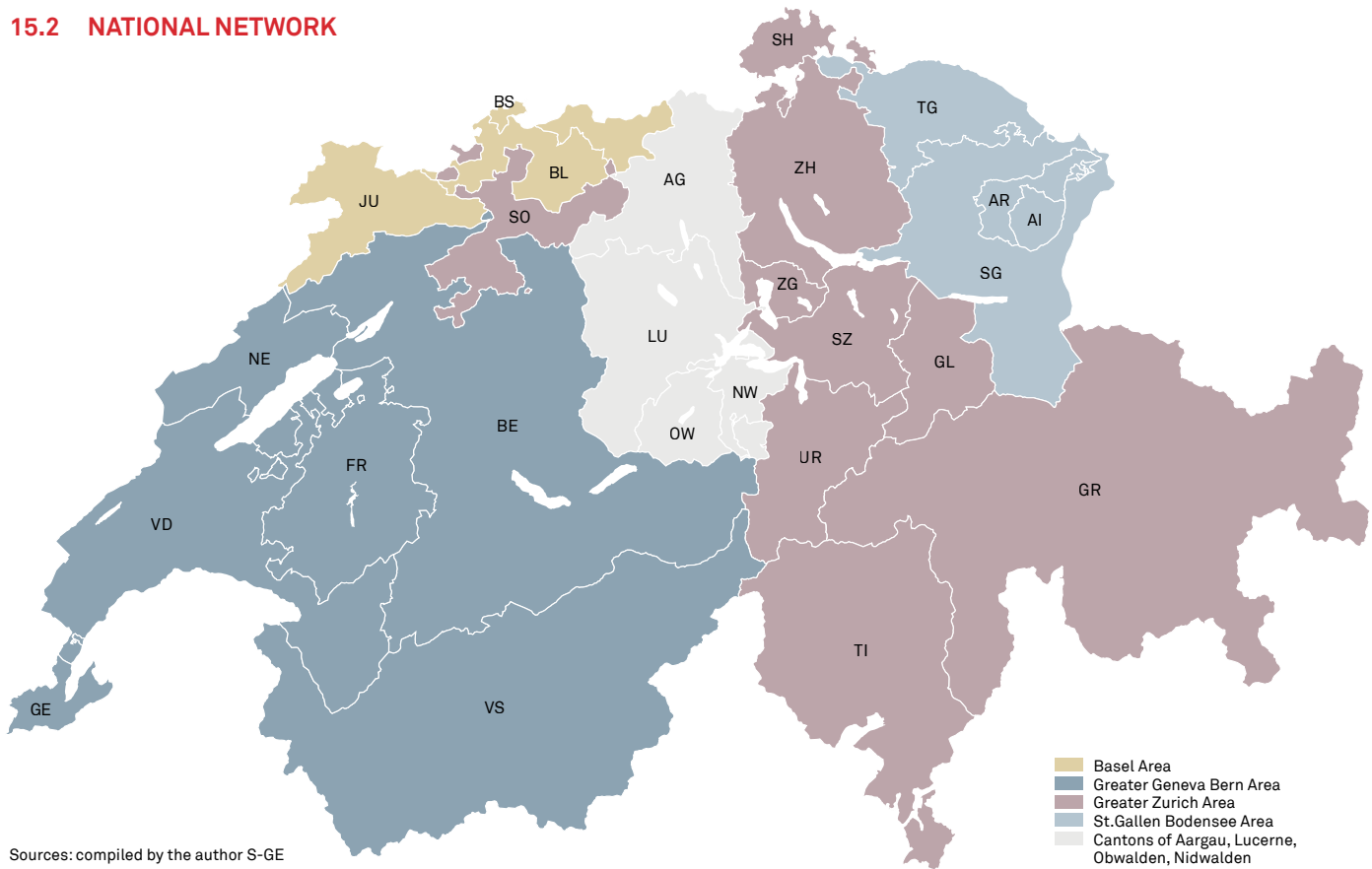
Swiss Business Hub Middle East
c/o Consulate General of
Switzerland
Dubai World Trade Center,
22nd floor
Dubai, United Arab Emirates
Phone +971 4 329 09 99
dai.sbhduhai@eda.admin.ch

Indonesia

Swiss Business Hub Indonesia
c/o Embassy of Switzerland
Jl. HR Rasuna Said Blok X3/2
Kuningan
12950 Jakarta-Selatan, Indonesia
Phone +62 21 525 60 61
wolfgang.schanzenbach@eda.
admin.ch

Switzerland Global Enterprise's
Trade Points can be found at:
www.s-ge.com/offices

15.2 NATIONAL NETWORK



15.2.1 Cantonal Business Promotion Agencies

Aargau (AG)

Services Economic Promotion
Rain 53
P.O. Box
5001 Aarau, Switzerland
Phone +41 62 835 24 40
aargau.services@ag.ch
www.aargauservices.ch

Appenzell Ausserrhoden (AR)

Office for economy
Government building
9102 Herisau, Switzerland
Phone +41 71 353 64 37
Fax +41 71 353 62 59
wirtschaft.arbeit@ar.ch
www.ar.ch/wirtschaft

Appenzell Innerrhoden (AI)

Office for economy
Marktasse 2
9050 Appenzell, Switzerland
Phone +41 71 788 94 44
wirtschaft@ai.ch
www.ai.ch/standort

Basel-Stadt (BS), Basel-Landschaft (BL) and Jura (JU)

Basel Area Business & Innovation
Dufourstrasse 11
4010 Basel, Switzerland
Phone +41 61 295 50 00
info@baselarea.swiss
www.baselarea.swiss

Bern (BE)

Economic Development Agency
Münsterplatz 3
3011 Bern, Switzerland
Phone +41 31 633 41 20
info@berninvest.be.ch
www.berninvest.be.ch

Fribourg (FR)

Fribourg Development Agency
(FDA)
Boulevard de Pérolles 25
PO Box 1350
1701 Fribourg, Switzerland
Phone +41 26 304 14 00
promfr@fr.ch
www.promfr.ch

Geneva (GE)

Directorate General for Economic
Development, Research and
Innovation
Rue de l'Hôtel-de-Ville 11
P.O. Box 3216
1211 Geneva 3, Switzerland
Phone +41 22 388 34 34
ecodev@etat.ge.ch
ingeneva.ge.ch

Glarus (GL)

Department for Economics and
Home Affairs
Zwinglistrasse 6
8750 Glarus, Switzerland
Phone +41 55 646 66 20
awa@gl.ch
www.gl.ch

Grisons (GR)

Economic Development and
Tourism Agency
Grabenstrasse 1
7001 Chur, Switzerland
Phone +41 81 257 23 42
info@awt.gr.ch
www.awt.gr.ch

Lucerne (LU)

Economic Region of Lucerne
Alpenquai 30
6005 Lucerne, Switzerland
Phone +41 41 367 44 00
info@luzern-business.ch
www.luzern-business.ch

Neuchâtel (NE)

Economic service
Economic promotion office
Avenue de la Gare 2
2000 Neuchâtel, Switzerland
Phone +41 32 889 68 20
neco@ne.ch
www.neuchateleconomie.com

Nidwalden (NW)

Economic development office
Nidwalden
Stansstadterstrasse 54
PO Box 1251
6371 Stans, Switzerland
Phone +41 41 618 76 54
wirtschaftsfoerderung@nw.ch
www.wirtschaftsfoerderung.nw.ch

Obwalden (OW)

Location promotion in Obwalden
Dorfplatz 1
6060 Sarnen, Switzerland
Phone +41 41 660 90 66
info@iow.ch
www.iow.ch

Schaffhausen (SH)

Economic development office
Canton of Schaffhausen
Freier Platz 10
8200 Schaffhausen, Switzerland
Phone +41 52 674 03 03
info@standort.sh.ch
www.economy.sh

Schwyz (SZ)

Office for Economy
Bahnhofstrasse 15
PO 1187
6431 Schwyz, Switzerland
Phone +41 41 819 16 34
Fax +41 41 819 16 19
awi@sz.ch
www.sz.ch/wirtschaftsfoerderung

Solothurn (SO)

Economic development office
Canton of Solothurn
Untere Sternengasse 2
4509 Solothurn, Switzerland
Phone +41 32 627 95 50
wifoe@awa.so.ch
standortsolothurn.so.ch

St. Gallen (SG)

Promotional activities
Office for Economy and Labor of
the Canton of St. Gallen
Davidstrasse 35
9001 St. Gallen, Switzerland
Phone +41 58 229 64 64
Info.Standortfoerderung@sg.ch
www.standort.sg.ch

Ticino (TI)

Economic development office
Viale S. Franscini 17
6501 Bellinzona, Switzerland
Phone +41 91 814 35 41
dfe-use@ti.ch
www.ti.ch/portale-impresa

Thurgau (TG)

Economic development office
Thurgau
Promenadenstrasse 8
8510 Frauenfeld, Switzerland
Phone +41 58 345 55 00
wifoe@tg.ch
www.wifoe.tg.ch

Uri (UR)

Economic development office
Canton of Uri
Klausenstrasse 4
6460 Altdorf, Switzerland
Phone +41 41 875 24 06
wirtschaft@ur.ch
www.standort-uri.ch

Vaud (VD)

Innovaud
Avenue de Gratta-Paille 2
1018 Lausanne, Switzerland
Phone +41 21 644 00 60
contact@innovaud.ch
www.innovaud.ch

Valais (VS)

Business Valais
Maison de Courten
Place St-Théodule
Case Postale 478
1950 Sion, Switzerland
Phone +41 27 606 73 90
info@business-valais.ch
www.business-valais.ch

Zug (ZG)

Economic Promotion
Aabachstrasse 5
CH-6301 Zug
Tel. +41 41 728 55 04
economy@zug.ch
www.zg.ch/economy

Zurich (ZH)

Office for economy and labor
Promotional activities for the
Canton of Zurich
Walchestrasse 19
8090 Zurich, Switzerland
Phone +41 43 259 49 92
standort@vd.zh.ch
www.standort.zh.ch

15.2.2 Intercantonal Location Promotion Organizations**Basel Area**

Basel Area Business & Innovation
Dufourstrasse 11
4010 Basel, Switzerland
Phone +41 61 295 50 00
info@baselarea.swiss
www.baselarea.swiss

GGBa

Greater Geneva Bern area
Invest Western Switzerland
World Trade Center
Av. de Gratta-Paille 2
PO Box 252
1000 Lausanne 22, Switzerland
Phone +41 21 644 00 90
info@ggba-switzerland.ch
www.ggba-switzerland.ch

Greater Zurich Area

Greater Zurich Area Ltd
Limmatquai 122
8001 Zurich, Switzerland
Phone +41 44 254 59 59
info@greaterzuricharea.com
www.greaterzuricharea.com

St.GallenBodenseeArea

St.GallenBodenseeArea
Davidstrasse 35
9001 St. Gallen, Switzerland
Phone +41 58 229 64 64
Info.Standortfoerderung@sg.ch
www.sgba.ch

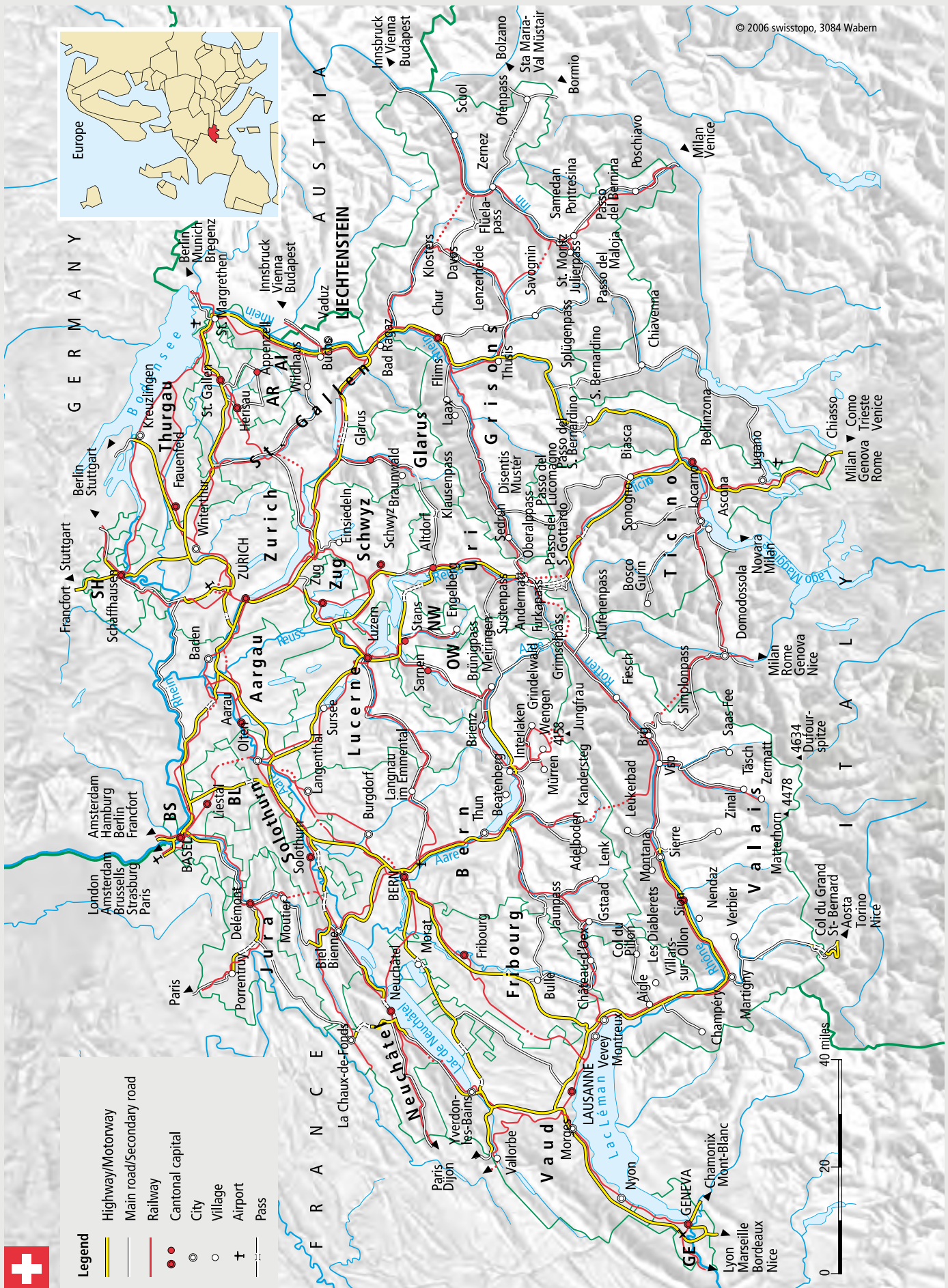
15.3 LIST OF FIGURES

FIG. 1	Reference Map.....	25
FIG. 2	The Swiss Political System.....	26
FIG. 3	Political Stability, 2019.....	27
FIG. 4	Most Cosmopolitan Economies, 2017.....	29
FIG. 5	Gross Domestic Product per Capita (Nominal), 2019....	31
FIG. 6	Industry Structure and Shares of Workforce, 2019.....	32
FIG. 7	International Competitiveness Ranking, 2020.....	32
FIG. 8	Global Innovation Index, 2019.....	33
FIG. 9	Foreign Trade by Economic Area, 2018.....	34
FIG. 10	Direct Investments Capital Stock, 2018.....	35
FIG. 11	Economic Freedom, 2017.....	41
FIG. 12	Legal Forms at a Glance.....	55
FIG. 13	Process of Establishing a Company (AG, GmbH).....	58
FIG. 14	Costs of Forming a Stock Corporation (AG).....	59
FIG. 15	Costs of Forming a Limited Liability Company (GmbH).....	59
FIG. 16	Do I Need a Visa?*	61
FIG. 17	Types of Permits.....	62
FIG. 18	Work and Residence Permits: Rules and Procedures....	65
FIG. 19	Market Prices for Office Space.....	70
FIG. 20	Building Land: Market Prices for Commercial Buildings	71
FIG. 21	Market Prices for Rented Accommodation.....	72
FIG. 22	Market Prices for Owner-Occupied Accommodation....	73
FIG. 23	Permit Requirements for Different Groups.....	75
FIG. 24	International Experience by Managers, 2019.....	77
FIG. 25	International Comparison of Motivation to Work, 2019	78
FIG. 26	Productivity, 2018.....	78
FIG. 27	Deregulation of the Labor Market, 2019.....	79
FIG. 28	Cooperation in Labour-Employer Relations, 2017.....	80
FIG. 29	Daytime, Evening, and Night-time Periods.....	81
FIG. 30	Flexibility in Hiring and Firing, 2017.....	83
FIG. 31	Overview of Obligatory Social Insurance Contributions	84
FIG. 32	Global Financial Centers, 2019.....	89
FIG. 33	Mortgage Rates, 2000–2020.....	92
FIG. 34	State Support Schemes.....	94
FIG. 35	Credit Rating: Top Ten Most Secure Countries, 2019....	95
FIG. 36	Capital Costs, 2019.....	95
FIG. 37	Inflation, 2020.....	95
FIG. 38	Total Tax Rate, 2018.....	100
FIG. 39	International Business Activity.....	107
FIG. 40	Switzerland's National and Regional Airports.....	114
FIG. 41	Digital Competitiveness, 2019.....	115
FIG. 42	The Swiss Education System.....	120
FIG. 43	Quality of the Education System, 2019.....	121
FIG. 44	Public per Capita Spending on Education, 2017.....	121
FIG. 45	Universities and Institutes of Technology.....	122
FIG. 46	Annual Tuition Fees.....	123
FIG. 47	Executive MBAs: The Most Important Providers.....	124
FIG. 48	Patent Applications per 100,000 Inhabitants, 2017.....	126
FIG. 49	Nobel Laureates per Million Inhabitants, 2018.....	126
FIG. 50	Research Establishments in Switzerland.....	127
FIG. 51	Innovation Focus Areas and Specialist Areas.....	128
FIG. 52	International Comparison of Quality of Life, 2019.....	131
FIG. 53	Development, Attraction and Retention of Talent, 2019	132
FIG. 54	Monthly Average Household Budget, 2017.....	137
FIG. 55	International Comparison of Purchasing Power, 2018... 137	
FIG. 56	Examples of Cantonal Business Promotion Instruments.....	140
FIG. 57	Areas of Application for Tax Breaks, 2016.....	140
FIG. 58	Technology Parks and Business Incubators.....	142

MAP OF EUROPE



MAP OF SWITZERLAND

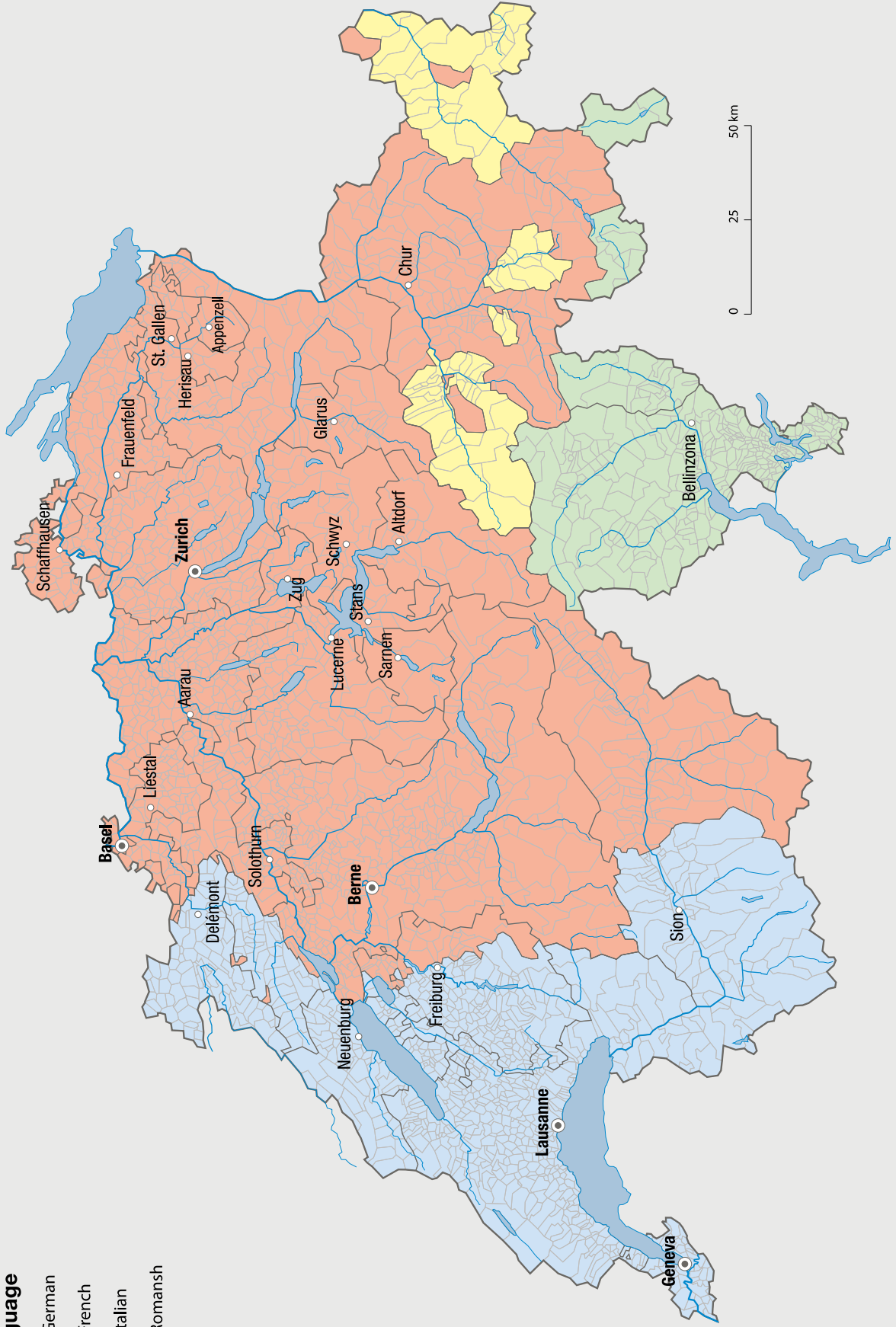


LINGUISTIC AREAS OF SWITZERLAND

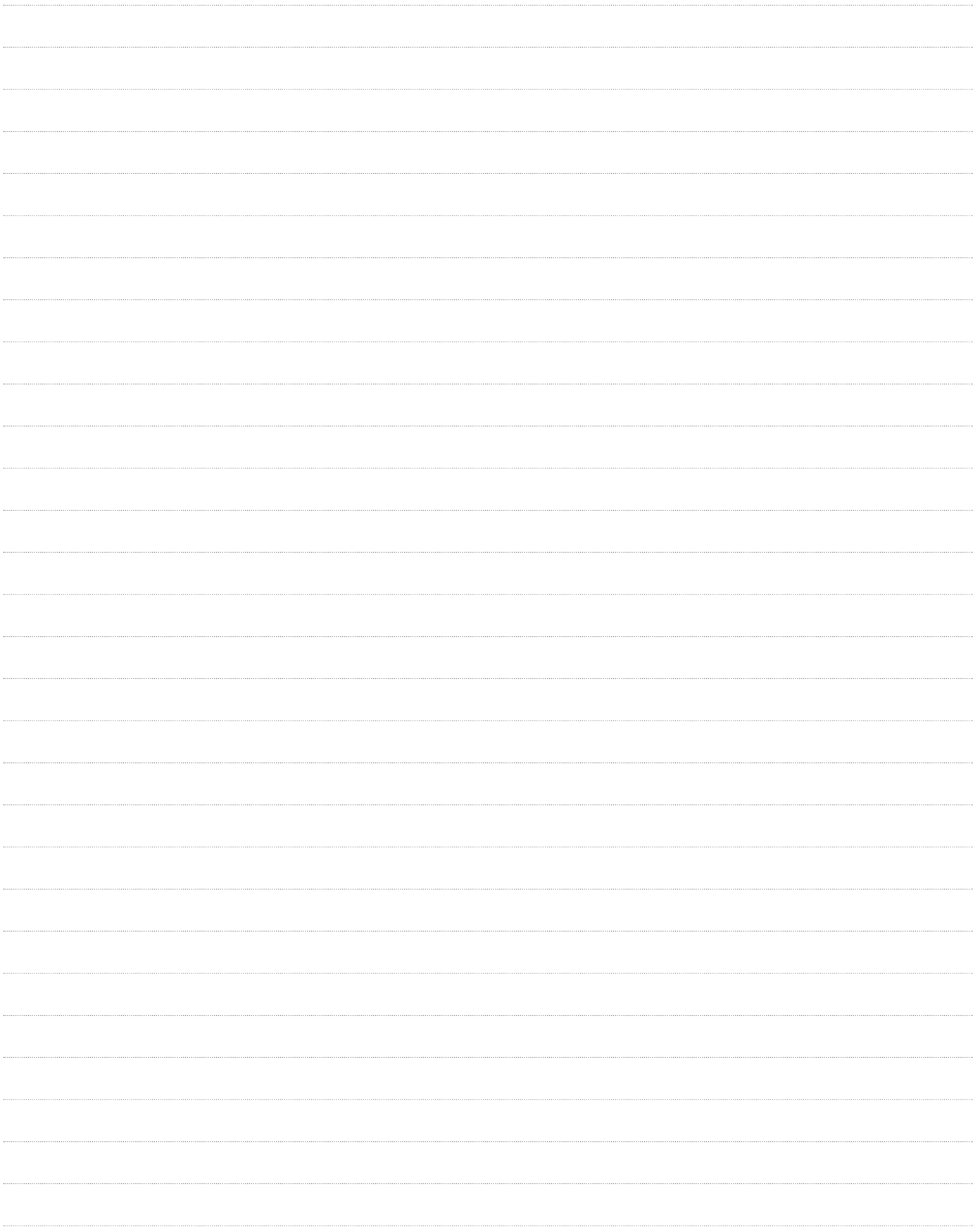
Language regions

Language

- German
- French
- Italian
- Romansh



Blank lined area for notes or text.



Investment Promotion

s-ge.com/invest



Follow us on LinkedIn and Twitter:

s-ge.com/linkedin-invest

twitter.com/investCH

Switzerland Global Enterprise
Stampfenbachstrasse 85
CH-8006 Zurich
Tel. +41 44 365 51 51

s-ge.com/invest
invest@s-ge.com

